

VICINITY MAP

NOT TO SCALE



BEVERLY E. HARTLETT
BOOK 950, PAGE 583

LOT 77
TIPTON LAKE
SUBDIVISION
SECTION D
PLAT CABINET F, SLIDE 69

SITE DATA: Book 1731 P9942

ZONING	R-3
TYPICAL LOTS	1-7, 16-50 (42)
TYP. LOT AREA	8,000 S.F.
TYP. LOT DIMENSIONS	60'X135'
SINGLE FAMILY ATTACHED	8-15 (8)
TYP. LOT AREA	13,000 S.F.
TYP. LOT DIMENSIONS	80'X165'
TOTAL NO. LOTS	50
TOTAL SITE AREA	±15.01 ACRES

BUILDING SETBACKS:

FRONT	25 FT.
REAR	20 FT.
SIDE (LOTS 1-7, 16-50)	10 FT.
SIDE (LOTS 8-15)	15 FT.

EASEMENT NOTE:
THE UTILITY EASEMENTS SHOWN ON THIS PLAT ARE FOR THE SOLE BENEFIT OF POPULAR GROVE UTILITY DISTRICT; WILKINGTON TELEPHONE, INC.; WILKINGTON DRAIN, INC.; ELEC. MEMBERSHIP COOPERATIVE. NO PERSON MAY ERECT ANY STRUCTURE WITHIN THE EASEMENTS OR OBSTRUCT ACCESS TO THE EASEMENTS IN ANY WAY WITHOUT THE WRITTEN PERMISSION OF EACH OF THESE UTILITIES.

SIDE & REAR YARD EASEMENT NOTE:
ALL LOTS SHALL HAVE 5' UTILITY EASEMENT ALONG SIDE AND REAR PROPERTY LINES.

FLOOD PLAIN NOTE:
THIS PROPERTY IS NOT LOCATED WITHIN THE 100 YEAR FLOODPLAIN ACCORDING TO THE FIRM MAP PRINTED DECEMBER 19, 2006.

JAMES E. CHANEY AND ANN CHANEY
BOOK 886, PAGE 889
TRACT #1

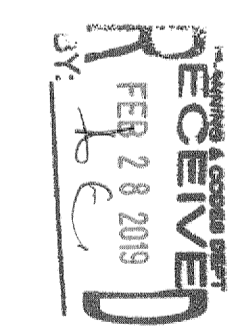
CURVE TABLE

CURVE	RADIUS	LENGTH	CHORD	CHORD BEARING	DELTA	TANGENT
C1	250.00'	58.32'	98.19'	N21°42'30"E	132°15'5"	29.29'
C2	300.00'	106.46'	105.21'	N01°46'30"W	302°29'55"	54.52'
C3	200.00'	34.36'	34.32'	S02°26'45"W	95°06'56"	11.22'
C4	225.00'	187.48'	182.10'	N31°29'50"W	474°42'26"	95.57'
C5	1000.00'	96.55'	96.52'	N04°51'39"E	5°31'56"	48.31'
C6	75.00'	107.86'	98.80'	S04°27'29"W	82°23'45"	65.65'
C7	150.00'	144.92'	139.35'	S44°25'02"W	55°27'16"	78.68'
C8	25.00'	41.21'	36.70'	N11°01'01"E	94°26'16"	21.02'
C9	225.00'	35.06'	35.02'	N19°29'21"E	85°53'31"	17.76'
C10	225.00'	35.06'	35.02'	N15°13'18"E	02°31'31"	17.76'
C11	225.00'	72.07'	71.66'	N02°35'36"E	182°07'16"	36.54'
C12	23.00'	34.66'	31.85'	S03°34'42"E	78°23'50"	20.06'
C13	100.00'	52.63'	52.63'	S03°34'42"E	300°18'	26.54'
C14	100.00'	60.65'	58.72'	S01°22'25"W	344°14'56"	31.29'
C15	100.00'	30.53'	30.41'	S27°29'58"W	172°28'30"	15.35'
C16	175.00'	25.79'	25.79'	S40°57'44"W	6°26'42"	12.92'
C17	175.00'	68.57'	67.94'	S59°22'38"W	22°23'06"	34.83'
C18	175.00'	73.39'	72.86'	S79°35'04"W	24°01'45"	37.24'
C19	175.00'	1.31'	1.51'	N88°09'11"W	07°29'45"	0.76'
C20	25.00'	39.27'	35.36'	N47°05'41"E	90°00'00"	25.00'
C21	50.00'	36.14'	35.36'	N18°36'36"W	41°24'35"	18.90'
C22	50.00'	25.28'	25.01'	S24°50'00"E	285°14'2"	20.81'
C23	50.00'	39.44'	38.45'	S12°14'45"W	45°11'42"	20.81'
C24	50.00'	35.61'	34.86'	S55°14'49"W	40°48'26"	18.60'
C25	50.00'	37.02'	36.18'	N47°20'26"W	42°25'36"	19.41'
C26	50.00'	37.02'	36.18'	N47°20'26"W	42°25'36"	19.41'
C27	50.00'	55.53'	52.72'	N11°14'19"E	63°37'54"	31.02'
C28	50.00'	3.95'	3.86'	S41°43'27"W	43°12'28"	1.86'
C29	50.00'	32.19'	31.64'	S20°23'15"W	35°53'00"	16.67'
C30	1025.00'	54.60'	54.59'	N03°37'14"E	303°07'	27.20'
C31	1025.00'	44.37'	44.37'	N06°23'12"E	272°48"	22.19'
C32	250.00'	15.98'	15.86'	N09°26'52"E	338°30"	7.95'
C33	250.00'	62.70'	62.53'	N19°27'11"E	142°20'07"	31.51'
C34	250.00'	70.72'	70.46'	N53°44'21"E	167°22'4"	35.60'
C35	250.00'	31.41'	31.39'	N49°26'55"E	71°13'	15.32'
C36	250.00'	27.60'	27.59'	N49°26'55"E	61°13'	13.61'
C37	175.00'	64.48'	64.11'	S44°48'44"W	21°06'35"	32.61'
C38	175.00'	98.74'	98.56'	S44°48'44"W	19°13'55"	32.61'
C39	275.00'	21.60'	21.60'	N17°16'51"E	197°53'5"	28.65'
C40	275.00'	28.50'	28.49'	N22°29'45"E	45°06'4"	14.81'
C41	25.00'	37.78'	34.29'	S17°50'00"E	88°35'47"	23.56'
C42	25.00'	35.36'	32.80'	S86°11'39"E	81°04'36"	21.38'
C43	50.00'	71.90'	65.87'	S04°27'29"E	82°24'45"	43.77'
C44	125.00'	109.47'	106.01'	S81°49'46"W	87°24'45"	58.53'
C45	125.00'	11.29'	11.29'	S89°30'25"W	5°10'33"	5.66'
C46	25.00'	39.27'	35.36'	N42°54'19"W	90°00'00"	25.00'
C47	975.00'	22.44'	22.44'	N02°54'03"E	1°56'44"	13.32'
C48	975.00'	66.70'	66.69'	N05°40'01"E	3°55'11"	33.36'
C49	200.00'	122.02'	125.06'	N12°13'39"E	91°7'05"	16.00'
C50	200.00'	31.48'	31.48'	N45°03'27"E	35°28'27"	6.83'
C51	565.536'	98.00'	98.00'	S33°44'44"W	01°19'11"	15.24'
C52	565.536'	112.12'	112.12'	S33°44'44"W	1°08'11"	56.06'
C53	565.536'	88.06'	88.06'	S34°53'36"W	0°53'33"	44.03'
C54	565.536'	98.02'	98.02'	S35°52'11"W	0°50'49'	49.01'
C55	565.536'	83.58'	83.58'	S39°27'23"W	0°50'49'	41.79'
C56	565.536'	98.00'	98.00'	S37°22'51"W	0°59'36"	48.00'
C57	565.536'	108.17'	108.17'	S39°25'17"W	1°05'47"	54.09'
C58	565.536'	98.09'	98.09'	S39°27'59"W	0°59'39"	48.07'
C59	565.536'	81.34'	81.34'	S40°22'33"W	0°49'28"	40.67'

FINAL PLAT
LOFT ESTATES

TIPTON COUNTY,
ATOKA, TENNESSEE

50 LOTS ±15.01 ACRES
DEVELOPER: TIPTON COUNTY, ATOKA, TENNESSEE
ENGINEER: CIVIL ENGINEERING SOLUTIONS, LLC
317 W. MARKET STREET
MEMPHIS, TN 38104
100 YR. FLOOD ELEVATION FROM COUNTY PANEL NUMBER 471616 0315 F
27 FEB 2019 SCALE: 1" = 50'
SHEET 1 OF 2



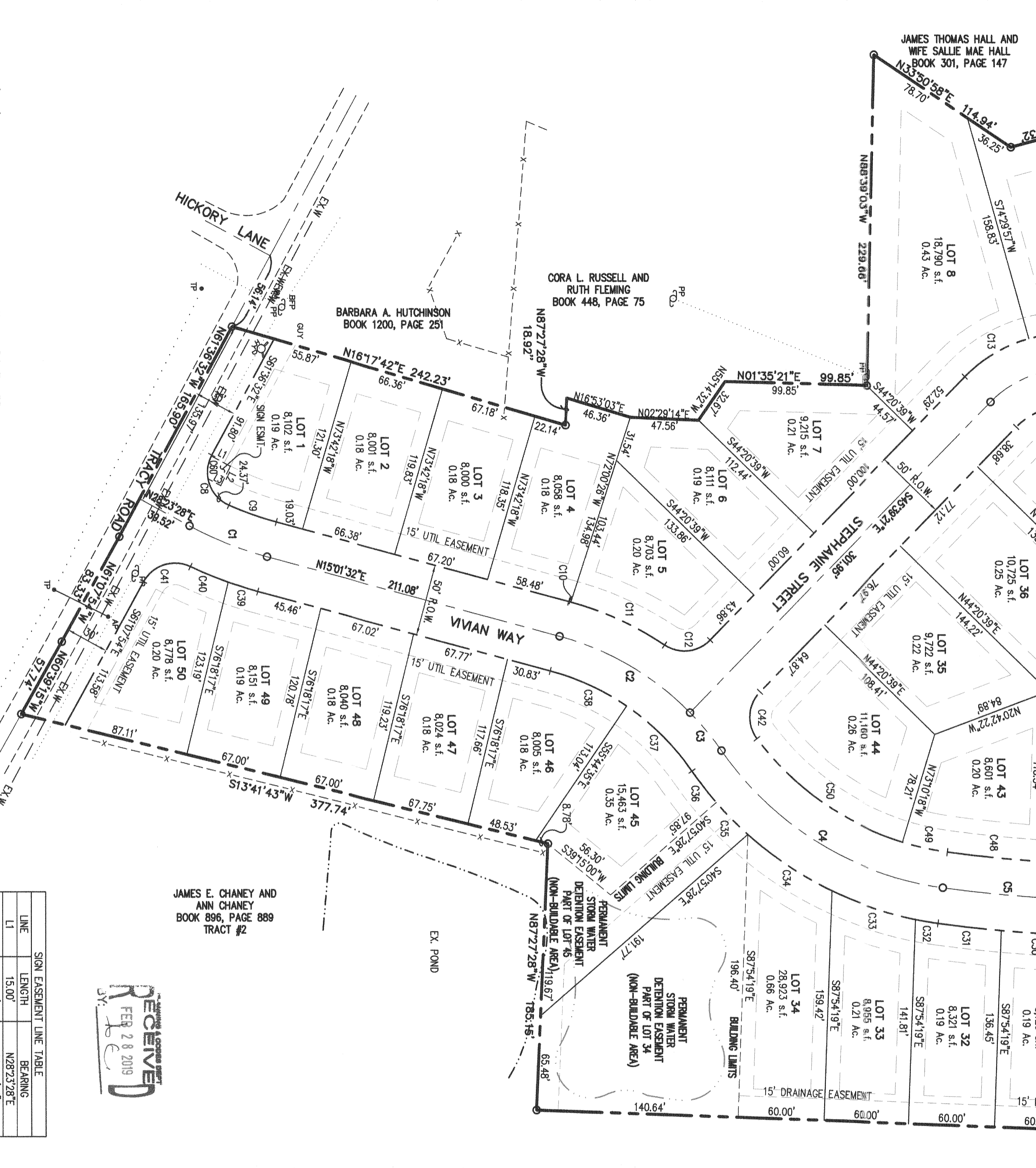
JAMES E. CHANEY AND ANN CHANEY
BOOK 886, PAGE 889
TRACT #2

SOIL EASEMENT CURVE TABLE

CURVE	RADIUS	LENGTH	DELTA	CHORD	CHORD DIRECTION	TANGENT
C60	25.00'	16.24'	377°30'	15.96'	S81°35'30"E	8.42'

SOIL EASEMENT CURVE TABLE

CURVE	RADIUS	LENGTH	DELTA	CHORD	CHORD DIRECTION	TANGENT
C60	25.00'	16.24'	377°30'	15.96'	S81°35'30"E	8.42'



BEING MARK (BLM) - FE-1368 - 4.6 M SW FROM ATOKA, ABOUT 4.55 MILES SOUTHWEST ALONG THE LINDS CENTRAL RAILROAD TRACKS, ABOUT 0.25 MILE NORTHWEST OF MILEPOST NO. 369, 66 FEET NORTHWEST OF THE NORTHWEST CORNER OF THE TRACKS, ABOUT 0.25 MILE NORTHWEST OF CULVERT UNDER THE TRACK, 23 FEET WEST-NORTHWEST OF A 30 INCH TELEPHONE POLE, 3/4 FEET SOUTHWEST OF THE RIGHT-OF-WAY FENCE LINE, 1 1/2 FEET ABOVE THE LEVEL OF THE TRACK, A DISK WELDED ON TOP OF A 2 1/2 INCH IRON PIPE PROJECTION 6 INCHES.
ELEV.=374.21' (NAVD83)